

STAR COMPUTERS - LAPTOPS



M6

- Intel Centrino Technology
- Awesome Radeon 9600 Graphics
- Large 15.4" Screen
- Long Life up to 10.5 hrs.
- Breakthrough Mobile Performance
- Ultra Light Under 6 lbs.

So Light yet so Powerful

The Star M6 incorporates latest mobile computing technology - Intel® Centrino™ Mobile Technology.

Based on Intel® Centrino™ Mobile Technology for computing, the Star M6 packs powerful performance in a nimble yet stylish casing to let you work efficiently and look good at the same time.

Superb Performance

The M6 is the world class ultra-slim notebook to adopt Intel® Centrino™ Mobile Technology (latest Pentium®M CPU included). The Centrino platform and Intel's SpeedStep(r) technology combined with Power4 Gear energy design provides longer battery life.



Wireless connection

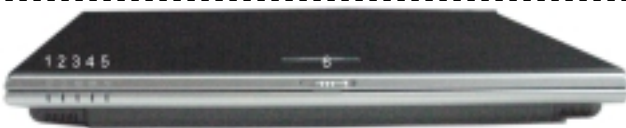
Built-in wireless LAN support allows today's corporate professionals to work without the constraints of wires and cables.

Intel® PRO/Wireless 2100 LAN Mini-PCI Adapter

Intel 802.11b technology gives you secure wireless connections with fast data rates up to 11 Mbps. Intel PROSet software provides advanced roaming capabilities and lets you manage your wireless connections.

M6 - FEATURES

Front



Status Indicators, 1: CD, 2: HD, 3: Battery, 4: Mail, 5: Wireless, 6: Screen Latch

Left



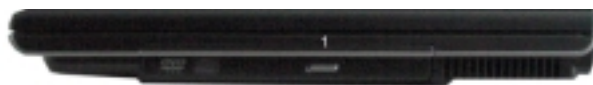
1: Modem, 2: Network, 3: 1394, 4: iRDA, 5: MultiCard, 5.1: PCMCIA 2, 7: CD Controls, 8: Mic, 9: Headphones, 10: CD Switch

Rear



1: Kensington® Lock Port, 2: DC Power, 3: Parallel Port, 4: AI Dock, 5: VGA, 6: S Video, 7: USB Ports

Right



1: Optical Drive

STAR COMPUTERS - LAPTOPS

M6 - SPECIFICATIONS

Processor & Cache	Intel® Pentium® M Processor with 1MB On-Die L2 Cache Speeds from 1.3+ GHz. Intel® Dothan Processor with 2MB On-Die L2 Cache Speeds from 1.8+ GHz. uFC-PGA Package
BIOS	AMI 4MB Flash EPROM, PMU, Plug & Play. Boot from IDE ODD and USB FDD Intel OSB Requirement Support Power4 Gear Function Support Touch-Pad Lock Function
Chipset	Intel Odem (855PM) & ICH4-M
Main Memory	2 x SODIMM Sockets for Expansion Up to 2 GB (BTO Option) 0M On Board Memory DDR 333 DRAM Support (SODIMM)
Display	14.1"/15.1" active matrix color TFT 14.1" XGA & 15.1" XGA/SXGA+ & 15.4" WXGA/WSXGA+ 256K Color Max Dual Channel LVDS I/F
Graphics & Video Module	ATI Mobility Radeon 9600 (M10-CSP64) with 64MB gfx memory AGP 4 X
CRT Display Modes	Depending On ATI Mobility Radeon 9600 Ability
PC Card Slot	PCMCIA 2.1 supports one Type III 32-bit PC CardBus 1.0 architecture
Multi-Card Reader	Standard one built-in card reader support MMC / SD Memory Stick / MS-Pro CF Adaptor via PCMCIA Solution
Hard Disk Drive	2.5" 9.5mm IDE HDD /w Ultra DMA/100 / S.M.A.R.T. Supported Supported capacities of 40/60/80 GB and 4200/5400 RPM (BTO)
Optical Storage Device	Interchangeable 5.25" ATAPI 24X CD-ROM module Interchangeable 5.25" ATAPI 8X DVD-ROM module Interchangeable 5.25" ATAPI 24X/24X/8X/24X DVD+CD- RW Interchangeable 5.25" ATAPI 1X2X/16X10X/8X24X DVD-RW Interchangeable 5.25" ATAPI 2X(2.4X)4X/24X24X/ 8X24X DVD- Support Module Hot Swap Function and 2 nd HDD/Batt.
Network Connectivity	Integrated mobile Calexico MiniPCI 802.11b module (BTO Option) Integrated mobile Calexico MiniPCI 802.11 b/g module (BTO) Integrated mobile ASUS MiniPCI 802.11 b/g module (BTO Option) Integrated universal PPT V.92 MDC Fax/ Modem On board 10/100/1000 Mbps Fast Ethernet Controller Full and Half duplex mode support for 10/100 Mbps Worldwide Regulation, MODEM supported V.92 and Universal PPT (CTR 21, JATE, FCC, A-tick, DGT, 中國入網許可) Wireless Certification System: TWN, CHN, FCC, European
LED Status Indicator	Power On/Suspend, Battery Full /Charging/Low, Email, WLAN Accessing/Activity, Audio DJ Accessing/Activity, Storage Access, Caps Lock, Number Lock,
Keyboard	Desktop-Like Ergonomic Full-Size 87/88key, 3mm Travel with Win Function Key

Hot Keys	Instant Launch Keys 5 Buttons Email, Internet, WLAN on/off, T/P-Lock on/off Power4 Gear Hotkey Support Overclock Function
Interface	One VGA port/Mini D-sub 15-pin for External Monitor Four USB 2.0 Ports One EPP/ECP Parallel Port/D-sub 25-pin One TV Out One IEEE 1394 B Type Jack Two Audio Jacks: Mic-in and Speaker-out One LAN RJ-45 and One Phone RJ-11 Jack One Infrared Ports Support IrDA PortBar III 68-pin Connector
Audio	Built-in AC'97 Compliant Audio Chip, with 3D Effect & Full Duplex Built-in Stereo Speakers and Microphone S/W Volume up/down
Audio DJ	One Power and Four Multimedia Keys (play/pause, stop, forward/volume up, rewind/volume down) Support Media Player (CD/MP3/
Power Management	Full feature SMI power management, Stand-by, Suspend to Disk, and Suspend to RAM ACPI 2.0 supported
Battery Pack & Life	Main: Li-Ion 8 cells, 14.8V, 4400mAh, 65W battery pack Swappable Second Battery Support (Using ODD Bay) Built-in gauge IC Run-down life, 7.4 hrs (10.5 hrs with the 2nd Battery) Charging time, 2 hrs Quick charge 90% (Power off) / 4hrs (Power Battery Low will enable the Power Management System under Windows Environment
AC adapter	Output : 19V DC, 3.42A, 65W Input : 100-240V AC, 50/60Hz universal 2/3 pin power supply system
Pointing Device	Built-in Touchpad 2 click buttons and 2 scroll up/down keys Support Pad-Lock Function (Hot Key on/off)
Heat Dissipation	24.5 W thermal envelop High-exchange efficiency copper molding heat sink with heat-pipes Temperature-controlled multi rotating speed cooling fan to prevent noise with "Flux Tunnel Routing"
Dimensions/Weight	354 x 273 x 22 ~ 34 mm ~5.6 lbs / 2.6 kg (w/ travel drawer)
PortBar III (option)	Feature One 100/10 MHz RJ-45 LAN port One EPP/ECP Parallel port/D-sub 25-pin Four USB 2.0 ports One VGA port / D-sub 15-pin for external monitor 65W DC-in jacks and power supply to main unit through a cable Dimension: 200 x 160 x 37mm (max)
USB FDD (Option)	Feature 1.44MB 3.5" FDD Support USB 1.1 Dimension: 170 x 132 x 18 mm (max.)
USB Accessory	Ai-Flash II
(option)	Ai-Remote USB Mouse USB Data Transfer Cable Support for Networking and USB 2.0